



## North Richland Hills Parks & Recreation Department

6720 N. E. Loop 820  
North Richland Hills, TX 76180  
[www.nrhtx.com/dept\\_parks](http://www.nrhtx.com/dept_parks)

**Tina Earle**

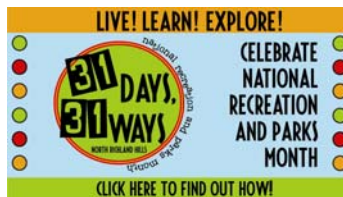
**Marketing Coordinator**

Phone: (817) 427-6671

E-Mail: [tearle@nrhtx.com](mailto:tearle@nrhtx.com)

**For Immediate Release  
July 1, 2009**

**[Click Here to See a Video on NRH National Recreation and Parks Month](#)**



## **Live, Learn, Explore: NRH celebrates July as National Recreation and Parks Month**

(North Richland Hills, Texas)—Since 1985, July has been recognized as Recreation and Parks Month by the National Recreation and Park Association. Public parks and recreation systems are dedicated to enhancing the quality of life for residents in the community through recreation programming, leisure activities and conservation efforts. Parks, recreation activities and leisure experiences provide opportunities for young people to live, grow and develop into contributing members of society; create lifelines and continuous life experiences for older members of our community; generate opportunities for people to come together and experience a sense of community; and pay dividends by contributing to economic vitality.

This year, the North Richland Hills Parks and Recreation Department has developed a **Live, Learn, Explore** Campaign for the community to discover the great opportunities available through parks and recreation including parks, trails, recreation facilities, programs and special events. To go along with **Live, Learn and Explore** NRH Parks and Recreation has partnered with **Sonic Drive Ins** to distribute Live, Learn, Explore scratch off cards to the public the first week in July, while supplies last. Each card is a winner of either a **free** Route 44 Sonic drink or \$1, \$3, or \$5 off of a program registration at either the NRH Recreation Center or Richland Tennis Center. Please stop by a Sonic in North Richland Hills and get a free scratch off ticket. Our vision is to create an environment where people play; laughter counts; communities grow and learn and everyone matters.

For more information on NRH Parks and Recreation, please contact 817-427-6600 or visit [www.nrhtx.com](http://www.nrhtx.com) .

###